

Fourth Grade Exit Tickets

Cluster 8 – NC.4.MD.6

Solve each problem.

1. If one hand of the clock pointed to the 12 and one hand pointed to the 9, how many degrees would the angle represent?



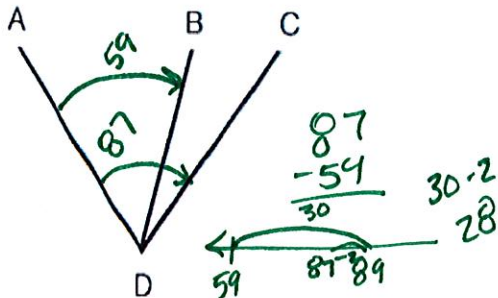
- A. 60° **B. 90°** C. 120° D. 180°

2. What is the best estimate measure for the angle below?



- A. 100° B. 10° C. 40° **D. 80°**

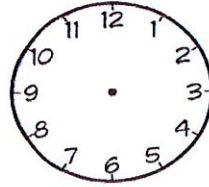
3. If angle ADC measures 87° , and angle ADB measures 59° , what is the measure of BDC?



Answer: 28°

Solve each problem.

1. If one hand of the clock pointed to the 12 and one hand pointed to the 9, how many degrees would the angle represent?



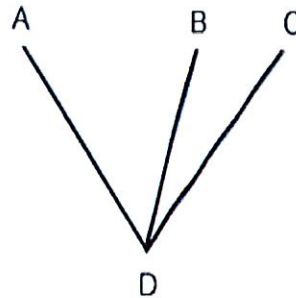
- A. 60° B. 90° C. 120° D. 180°

2. What is the best estimate measure for the angle below?



- A. 100° B. 10° C. 40° D. 80°

3. If angle ADC measures 87° , and angle ADB measures 59° , what is the measure of BDC?



Answer: _____

Answer Key:

1. B

2. D

3. 280