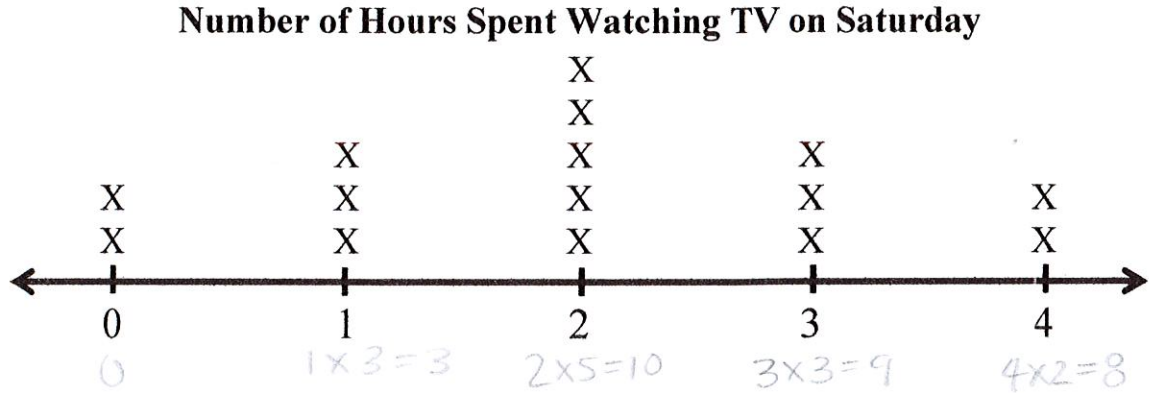


Name Key

Quarter 1 (Clusters 1-3)

1. The line plot shows the number of hours students spent watching TV last Saturday.

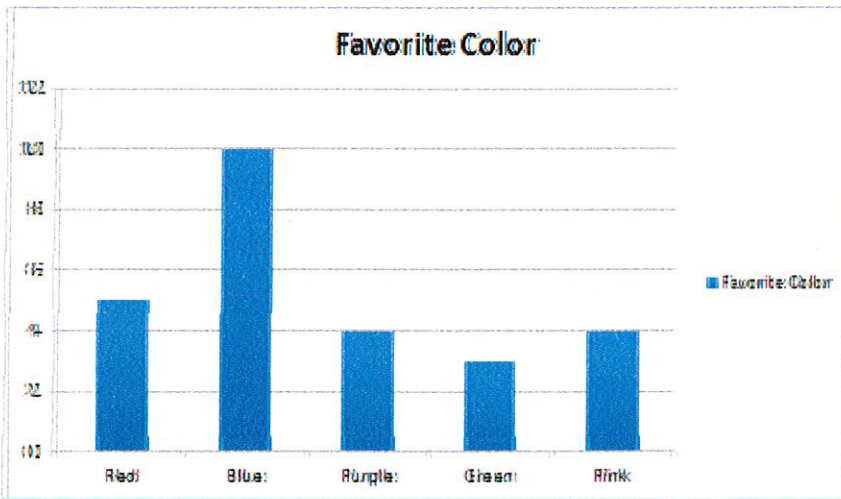


How many hours did the students spend watching TV last Saturday?

- a. 15 hours
- b. 30 hours
- c. 13 hours
- d. 27 hours

$3 + 10 + 9 + 8 = 30$
OR
 $1 + 1 + 2 + 2 + 2 + 2 + 2 + 3 + 3 + 3 + 4 + 4 = 30$

2. What type of data is represented in the bar graph below?



- a. Categorical Data
- b. Numerical Data
- c. Neither numerical or categorical data
- d. Both numerical and categorical data

3. Students in Mrs. Tyler's class kept track of how many minutes they read throughout the month of September. They recorded this information in the table below:

135	210	135	120	151
152	135	120	211	152
135	140	144	144	135
140	135	210	120	200
151	135	211	140	121

135 7x
144 2x
140 3x

What can you tell from the information in this table?

- a. 135 minutes occurred least frequently
 b. 144 minutes occurred more times than 140 minutes occurred
 c. 135 minutes occurred most frequently
 d. 200 is the highest number of minutes the students read in September
4. Julia is 9 years old. Her dad is 4 times older. How old is Julia's dad?

- a. 13
 b. 5
 c. 40
 d. 36

$$9 \times 4 = 36$$

$$9 + 9 + 9 + 9 =$$

$$\begin{array}{r} 18 \quad 18 \\ \hline 36 \end{array}$$

5. A new video game costs \$66. That is 6 times more than a used video game. How much does a new video game cost?

- a. \$11
 b. \$60
 c. \$72
 d. \$10

$$66 \div 6 = 11$$

$$6 \times \frac{?}{11} = 66$$

6. In the last week of June, 132 students signed up for soccer camp. Coach Bob will teach 3 teams and Coach Miller will teach 3 teams. If all the teams will have the same number of students, how many students will be on each team?

- a. 21
 b. 22
 c. 44
 d. 19

Handwritten work for Question 6:

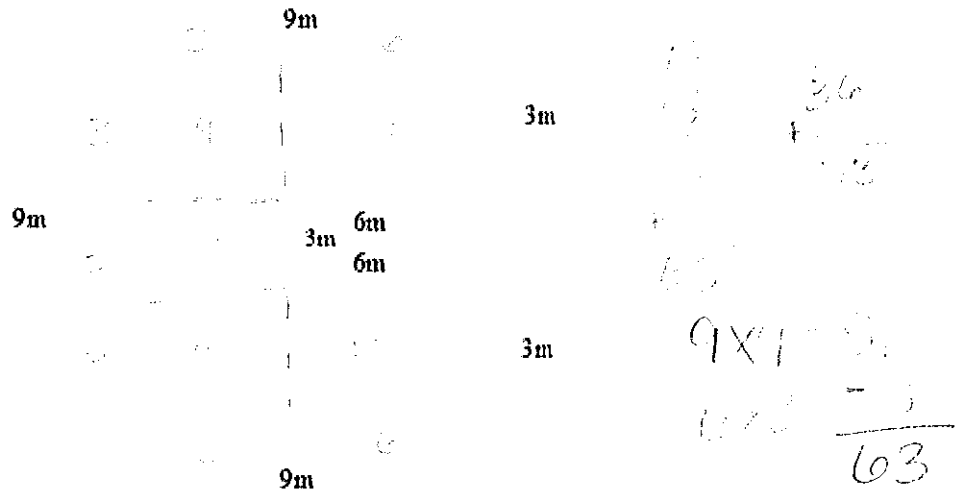
$$132 \div 6 = 22$$

$$66 \div 3 = 22$$

$$132 \div 3 = 44$$

$$44 \div 2 = 22$$

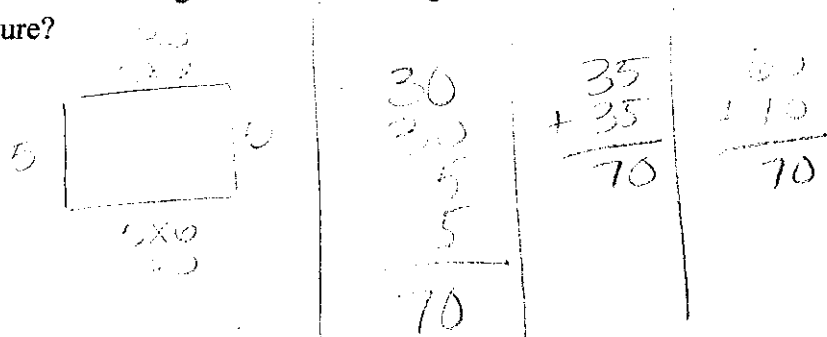
7. A new floor plan for an addition to Tina's house is pictured below. What is the total area of the floor plan?



- a. 27 sq meters
 b. 63 sq meters
 c. 54 sq meters
 d. 12 sq meters

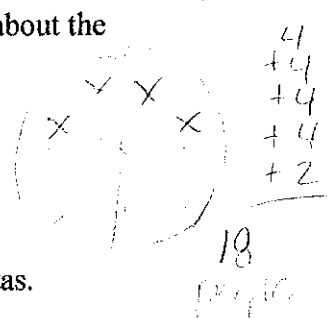
8. The Asheboro Zoo is putting in a new enclosure for the boa constrictors. The width of the enclosure is 5 feet wide. The length is 6 times as long as the width. What is the perimeter of the enclosure?

- a. 60 feet
 b. 35 feet
 c. 70 feet
 d. 10 feet



9. Five pizzas were served at a party. Each pizza was cut into 8 pieces. Each person ate exactly 2 pieces of pizza. There were 4 pieces of pizza leftover. What is true about the number of people who were at the party?

- a. The number of people who were at the party is greater than 20.
- b. The number of people who were at the party is greater than 25.
- c. The number of people who were at the party is less than 20.
- d. The number of people who were at the party is 10 times the number of pizzas.



10. Larry worked this summer and he has saved all \$620 of money he has earned so far. He makes \$10.00 an hour. He is saving money to buy a new game system that costs \$680.00. How many more hours does Larry need to work in order to have enough money for the game system?

- a. 6
- b. 18
- c. 10
- d. 8

$$\begin{array}{r} 680 \\ -620 \\ \hline 60 \text{ more} \end{array} \quad 60 \div 10 = 6$$

$$\begin{array}{r} 620 \\ +10 \text{ ①} \\ \hline 630 \\ +10 \text{ ②} \\ \hline 640 \\ +10 \text{ ③} \\ \hline 650 \\ +10 \text{ ④} \\ \hline 660 \\ +10 \text{ ⑤} \\ \hline 670 \\ +10 \text{ ⑥} \\ \hline 680 \end{array}$$